

# —TONGARIRO— **National Park Villages**



**Visitors  
Guide**

Life captured Photography  
Conrad Smith

# LAND OF LEGEND – WHERE ADVENTURE AWAITS

Home to three active volcanic mountains, and iconic and majestic landscapes, Tongariro National Park is a land of legend.

New Zealand's oldest national park, Tongariro National Park is a dual World Heritage area. This status recognises both the park's Māori cultural and spiritual significance, and its unique volcanic features.

The villages of National Park, Whakapapa, Raurimu and Erua lie at the heart of this volcanic wonderland. They offer an exceptional choice of accommodation, dining, activities and services to create a truly legendary experience.

## CREATE MEMORIES

Hike across or ski on active volcanoes

Soak in the spiritual significance & natural splendour of three volcanic peaks at once

Bike through ancient native forests

Stay, eat, drink and shop with views of majestic mountains



# TOP 10 FABULOUS THINGS TO DO IN & AROUND TONGARIRO NATIONAL PARK



1

Ski, board or play in the snow on an active volcano - Mt Ruapehu.

2

Hike the world-famous Tongariro Alpine Crossing in summer or go guided in winter.

3

Take to the skies in a scenic flight and witness the volcanoes of the Tongariro National Park in all their glory.

4

Absorb the stark beauty and magical colours of a volcanic explosion crater lake.

5

Experience true isolation as you journey through deep canyons and ancient forests along the Whanganui River.

6

Feel the adrenaline rush of a quad bike adventure or paddle board the highest lake in New Zealand.

7

Push your limits on the Mountains to Sea Cycle Trail and 42 Traverse.

8

Traverse ancient lava flows and wander along glacier streams to the Instagram-worthy Taranaki Falls - no filter required!

9

Become one with the universe as you stargaze while staying overnight in a mountain hut.

10

Enjoy warm hospitality and hearty meals in family-friendly restaurants and cafes with three majestic volcanoes as the backdrop.



# WALKING & HIKING

## YOUR TONGARIRO ADVENTURE AWAITS



Ancient lava flows, active craters, steam vents, emerald-coloured lakes and magnificent views combine to make a hike in Tongariro National Park an unforgettable journey.

The fourth oldest national park in the world, Tongariro National Park is home to some of New Zealand's premier hikes.

Experience our world-famous dramatic volcanic landscape - rich in colour, culture, glacial valleys and plant life.

Wander across alpine meadows, through ancient forests, along mountain streams or over rugged volcanic terrain and discover what makes this Dual World Heritage Area so unique and mesmerising.

From various short walks to the Tongariro Alpine Crossing - world-renowned as the best one-day trek in New Zealand, through to iconic multi-day hikes like the Round the Mountain track or Tongariro Northern Circuit Great Walk, a hiking adventure awaits you.

With walks and hikes to suit all levels, anyone can come and escape in our unique and rugged outdoors.

### FUN FACT

At 1886m, Red Crater is the highest point on the Tongariro Alpine Crossing.



## HIGHLIGHTS

Trek 19.4km across a volcanic alpine landscape of dramatic contrasts on the Tongariro Alpine Crossing

See the Taranaki Falls tumble 20m over the edge of a 15,000-year-old lava flow

Overnight in a backcountry hut on the Tongariro Northern Circuit - one of New Zealand's Great Walks

Capture views of three mighty volcanoes - Tongariro, Ngauruhoe & Raupahu



## MORE INFORMATION

Shuttles & Transport [page 38](#)

Adrift Tongariro [page 33](#)

Adventure Outdoors Tongariro [page 31](#)

Tongariro Alpine Crossing [tongariroalpinecrossing.org.nz](http://tongariroalpinecrossing.org.nz)





# SKIING & SNOWBOARDING



## HIGHLIGHTS

Learn to ski or snowboard at Whakapapa's world-class beginner facilities

**Savour unbeatable views from Knoll Ridge Café at 2020m**

Enjoy night skiing at Whakapapa on Fridays & Saturdays

**Ride New Zealand's highest chairlift, the High Noon Express, at Tūroa**

Experience the thrill of skiing or snowboarding on an active volcano! Mt Ruapehu hosts New Zealand's two largest ski areas - Whakapapa & Tūroa.

With a huge range of lift-accessed terrain within its 550-hectare boundary, Whakapapa caters for first timers right through to advanced skiers out to challenge their limits

Whakapapa is home to Happy Valley - New Zealand's premier learning area with gentle slopes and covered carpet lifts.

For the more advanced, there is plenty of epic terrain with steep chutes, wide basins, gullies and powder stashes all over the mountain.

Renowned for massive snow bases and truly epic terrain, Tūroa

offers a whopping 722m of vertical descent and New Zealand's highest chairlift - the 6-seater High Noon Express.

On a clear day you can enjoy unparalleled views from Whakapapa across the central North Island and the Tongariro Dual World Heritage National Park. At 2020m, Whakapapa also has the highest café in New Zealand - open all year round.

## FUN FACT

A \$25 million luxury gondola - the largest & most technically advanced in NZ - is expected to open at Whakapapa in winter 2019.



## MORE INFORMATION

Whakapapa & Tūroa ski areas page 32

Ski Biz & Snowzone @ Alpine Centre page 36



# CYCLING & MOUNTAIN BIKING



Stunning scenery with varied and diverse trails to suit everyone from passionate mountain bikers to recreational cyclists make us a destination of choice for anyone on two wheels!

Whether you're a speed junkie, looking for downhill adventure or a casual cruise, there's a biking trail to match.

Our villages provide easy access to several must-do trails - including the (in)famous 46km 42 Traverse, one of New Zealand's best adventure rides, and the Mountains to Sea trail - a New Zealand Cycleways Great Ride.

From National Park Village you can also hop on your bike and onto two great family-friendly rides: Fishers Track - a fun downhill

track with awesome mountain views before descending through native forest; and Marton Sash & Door - a community-operated loop track that follows a historic bush tramway.

Or take a local shuttle or tour to experience the history-steeped Ohakune Old Coach Road trail, the impressive Bridge to Nowhere and famous Timber Trail cycleway.

If four wheels are more your thing, ride the hills of Raurimu on a quad-bike with Ruapehu Adventure Rides.

## FUN FACT

The Bridge to Nowhere was opened in 1936, but by 1944 the farming community it served was abandoned.



## HIGHLIGHTS

Challenge your skill on the 42 Traverse - a must do for experienced riders

**Follow the old horse-drawn coach track between Horopito & Ohakune**

Enjoy panoramic views & a fun, Grade 2 downhill ride on Fishers Track

**Bike to the historic Bridge to Nowhere & return by jet boat!**



## MORE INFORMATION

Adrift Tongariro page 33

My Kiwi Adventure page 35

Ruapehu Adventure Rides page 37

Tongariro River Rafting Mountain Bike Hire & Tours page 36



# WATER ACTIVITIES



## HIGHLIGHTS

Kayak, row or jet boat to  
to Nowhere on the  
Whanganui River

Enjoy a New Zealand's  
highest guided stand-up  
paddleboard adventure

Drift, raft or fish on the mighty  
Tongariro River

Spot a rare whio in the  
clean, fast-flowing water  
of our rivers

Floating is the best way to really explore thousands of kilometres of waterways in the neighbouring Tongariro and Whanganui National Parks.

With an abundance of crystal-clear rivers, streams, wetlands and lakes, you'll be inundated with a choice of water-based activities surrounded by stunning scenery and pristine forest.

Some of our most diverse and breath-taking wilderness can only be explored on water - whether it's a quiet drift or a white knuckled turbulent experience over rapids.

A journey down the Tongariro and Whanganui Rivers combine the natural beauty of unspoilt banks with a trip back to the Jurassic age. If you're lucky, you may even spot

the rare and critically endangered New Zealand native blue duck, the whio, which lives only in clean, fast-flowing rivers.

Enjoy New Zealand's highest guided stand up paddle board adventure on Lake Otamangakau at 616 metres above sea level. Or try your luck trout fishing on the Tongariro or Whakapapa Rivers.

## FUN FACT

The population of the whio is under 3000 - making it more rare than the kiwi.



## MORE INFORMATION

Adrift Whanganui River Guiding page 33

Adventure Outdoors page 31

My Kiwi Adventure page 35

Tongariro River Rafting page 36





# FAMILY FUN



## HIGHLIGHTS

Enjoy the “ride of your life” at Ruapehu Adventure Rides

**Fly over active volcanoes**

Picnic in the world’s fourth oldest national park

**Explore the beauty of vivid landscapes by foot, bike or boat**

With new quests and adventures around every corner, your family will soon create lasting family memories staying in one of our family-friendly villages.

Spend quality time together - away from the stresses of big city lives - as you explore the vast landscape by bike or foot, climb the highest peak or float down one of our mighty rivers.

From June to October, come and play in the snow - or get the kids on skis or a snowboard, and have a break at New Zealand’s highest café - at 2000m.

Challenge the kids to game of mini-golf or test their courage on an indoor climbing wall. For the more adventurous, nothing beats the thrill of quad biking on wide

open spaces through some of New Zealand’s most stunning scenery, or taking a scenic flight over three active volcanoes.

And at the end of the day, relive your adventures over a great meal in a family-friendly restaurant, before relaxing and recharging in a comfy and warm, family suite.

With so much to do and experience for kids and parents alike, it’s little wonder this is the adventure playground for thousands of families each year.

## FUN FACT

About one million people visit **Tongariro National Park** each year.



## MORE INFORMATION

**Adrift Whanganui River Guiding** page 33

**Mountain Air** page 34

**My Kiwi Adventure** page 35

**National Park Climbing Wall** page 34

**Ruapehu Adventure Rides** page 37

**Schnapps Mini Golf** page 35

**Tongariro River Rafting** page 36

**Whakapapa & Tūroa ski areas** page 32





## TONGARIRO National Park Villages

Our villages may be small but are surrounded by the stunning backdrop of three majestic mountains. Visitors are drawn to the Tongariro National Park by its natural beauty. Our villages are the starting point for travellers seeking accommodation in historic Chateaus to eco-friendly lodges, camping, backpackers and family-friendly motels. There is wide choice to suit all budgets and star levels.

[nationalpark.co.nz](http://nationalpark.co.nz)

[tongarirocrossing.org.nz](http://tongarirocrossing.org.nz)



### ADVENTURE LODGE & MOTEL

- Motel units sleeping up to 5 people
- Bed and Breakfast with queen ensuite
- Double/Twin budget rooms

Cooked breakfast, packed picnic lunch, open log fire, internet access, spa pool, Sky TV and DVD, Mountain Transport. Check the website for our world famous Tongariro Freedom Package.

0800 321 061 or 07 892 2991

21 Carroll Street, National Park

[adventurelodge@xtra.co.nz](mailto:adventurelodge@xtra.co.nz)

[www.adventurenationalpark.co.nz](http://www.adventurenationalpark.co.nz)

*Adventure*  
Lodge and Motel

# PLACES TO STAY



## CHATEAU TONGARIRO HOTEL

Chateau Tongariro Hotel believes in providing visitors with a timeless elegance, and in preserving history and tradition. The Chateau Tongariro is surrounded by a stunning natural playground and provides classic contemporary accommodation with a touch of elegance; restaurants, bars, conference facilities and is a popular wedding destination throughout the year.

0800 242 832 or 07 892 3809

[stay@chateau.co.nz](mailto:stay@chateau.co.nz)

[www.chateau.co.nz](http://www.chateau.co.nz)

State Highway 48 Whakapapa  
Village Tongariro National Park



## ALPINE CHALETs

Enjoy spectacular mountain views close to the adventure that Tongariro National Park has to offer. Alpine Chalets is located among mature native trees and established gardens. There are twelve warm and comfortable units each with a self contained kitchen and en-suite bathroom and all within close walking distance to restaurants and cafes.

07 892 2932

[bookings@alpinechalets.co.nz](mailto:bookings@alpinechalets.co.nz)

3 Findlay Street, National Park Village

[www.alpinechalets.co.nz](http://www.alpinechalets.co.nz)



## THE CROSSING BACKPACKERS

Located between Whakapapa and Turoa ski fields. Ideal base for the Tongariro Alpine Crossing, with transport options available.

Free bus & train shuttle from National Park Village. Dorm and private rooms, family units, summer camping.

Communal kitchen, lounge, dining room, DVD room, games room, free WIFI, spa pool, drying room.

07 892 2894

[office@thecrossingbackpackers.co.nz](mailto:office@thecrossingbackpackers.co.nz)

9 Erua Road East, Erua

[www.thecrossingbackpackers.co.nz](http://www.thecrossingbackpackers.co.nz)



## DISCOVERY LODGE

Enjoy breathtaking views of the volcanoes and surrounding nature from the luxury of a mountain chalet, or the restful view of native alpine forest & sunset from the comfort of a motel apartment.

Or go for the freedom of camping, or the privacy of a camping hut. Be sure to enjoy our warm friendly service and expert local advice.

0800 122 122

State Highway 47, Whakapapa

[www.discoverynz.com](http://www.discoverynz.com)



# PLACES TO STAY



## HOWARD'S MOUNTAIN LODGE

- Deluxe Ensuite Accommodation
- Sporting Lodge with Shared Facilities
- Backpacker Friendly Dorms

Two guest lounges with log fire, 42 inch plasma TV's and DVD players. Free DVD library and Free spa. Tongariro's best shuttle service. Available, ski and hiking hire shop onsite. Contact us today!

07 892 2827

[info@howardslodge.co.nz](mailto:info@howardslodge.co.nz)

43-45 Carroll street, National Park

[www.howardslodge.co.nz](http://www.howardslodge.co.nz)



## NATIONAL PARK BACKPACKERS

Magnificent views of volcanoes right our your doorstep.

Dorms, 4-6 share, double and twin rooms with ensuite - from \$23pp/n for BBH & YHA members.

Full kitchen, TV lounge, laundry, tent sites in summer, internet, wi-fi, challenging indoor climbing hall, own bus to Tongariro Alpine Crossing, 42 Traverse, Fishers Track, bus transfers and tours on request. Free pick up from Train/ Intercity Bus.

07 892 2870

[nat.park.backpackers@xtra.co.nz](mailto:nat.park.backpackers@xtra.co.nz)

Findlay Street,

National Park Village

[www.npbp.co.nz](http://www.npbp.co.nz)

**National Park Backpackers**



## MOUNTAIN HEIGHTS LODGE

Mountain Heights Lodge offers bed & breakfast in comfortable ensuite rooms in the private guest wing of the Lodge.

We also have self-contained motel units, with double glazing, fully equipped kitchenettes, TV & bathroom.

Transport to the Alpine Crossing organised.

07 892 2833

[mountainheights@xtra.co.nz](mailto:mountainheights@xtra.co.nz)

PO Box 43, National Park Village

[www.mountainheights.co.nz](http://www.mountainheights.co.nz)



## THE PARK HOTEL

- Free Wi-fi • Conference & Team Building Facilities
- Crossing Transport

The ideal base for your Tongariro National Park adventure. We're the only 3 star hotel in the region, providing a friendly, relaxed environment to stay after your days activities. Relax in our hot spas before dinner and drinks in front of the roaring log fire in our Aspen style lodge restaurant and bar.

0800 800 491 or 07 892 2748

[bookings@the-park.co.nz](mailto:bookings@the-park.co.nz)

Corner Millar St & State Highway 4

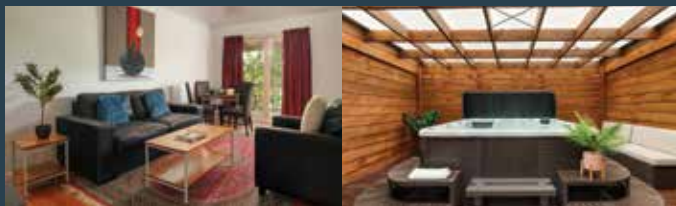
National Park Village

[www.the-park.co.nz](http://www.the-park.co.nz)





# PLACES TO STAY



## PLATEAU LODGE

**Comfortable Modern Accommodation**

Your escape to the wilderness, come play with us in the beautiful Dual Heritage, Tongariro National Park.

All day departures to the Tongariro Alpine Crossing.  
Cafes, Bars and Minimart all in walking distance from us.  
Apartments, ensuite, lodge rooms, camping.

0800 861 861 or 07 892 2993

[info@tongarirocrossingshuttles.co.nz](mailto:info@tongarirocrossingshuttles.co.nz)

17 Carroll St, National Park Village

[www.tongarirocrossingshuttles.co.nz](http://www.tongarirocrossingshuttles.co.nz)



## PUKENUI LODGE

*A home away from home*, located in the heart of the National Park Village and has one of the best views of the Whakapapa ski fields.

Pukenui Lodge is centrally heated throughout the whole lodge, offering one of the warmest accommodations in the Tongariro region. Offering a wide range of accommodation from ensuite rooms with interconnecting rooms for families, to standard rooms sleeping up to 4 people with communal facilities within the lodge.

0800 785 368 or 07 892 2882

[pukenuilodge@xtra.co.nz](mailto:pukenuilodge@xtra.co.nz)

1 Millar Street, National Park Village

[www.pukenuilodge.com](http://www.pukenuilodge.com)



## PIPERS LODGE

Pipers Lodge is a family owned and operated lodge catering for families-groups or individuals.

Pipers have a range of rooms from quad-twin-double rooms with shared facilities to ensuite rooms.

Pipers offer meals, ski hire, spa pools games room and in house bar.

**Give us a call today.**

07 892 2777 or 07 892 274 (fax)

[pipersnp@xtra.co.nz](mailto:pipersnp@xtra.co.nz)

18 Millar Street

PO Box 52, National Park 3948



## SKI HAUS

**Comfortable budget accommodation.**

Dorm, double/family rooms - ideal for groups, fully catered if required. Tent and powered camper van sites available - something for everyone!

Alpine lounge with a big log fire & conversation pit. Dinner and breakfast on request and drying room. Transport to Tongariro Alpine Crossing, 42 Traverse and Whakapapa ski field (daily).

07 892 2854

[skihaus@xtra.co.nz](mailto:skihaus@xtra.co.nz)

Carroll Street, National Park Village

[www.skihaus.co.nz](http://www.skihaus.co.nz)

# PLACES TO STAY



## SLALOM LODGE

Located in the historic village Raurimu, 15 minutes to Tongariro Alpine Crossing. 20 minutes to Whakapapa Ski Field.

Super low room rates, large guest kitchen & free wifi. 48 rooms: Double, twin and bunkroom with shared facilities, 4-5 room villas.

Restaurant, bar and music. Relax in our spacious lounge with open fire & dance floor. **Check our website for specials and deals!**

07 892 2855

[slalomlodge@xtra.co.nz](mailto:slalomlodge@xtra.co.nz)

11 Kaitieke Road, Rurimu Village

[www.slalomlodge.com](http://www.slalomlodge.com)



## TONGARIRO CROSSING LODGE

A warm welcome, large comfortable suites and exceptional personal service await you at Tongariro Crossing Lodge.

Set among beautifully maintained gardens, our family-run boutique lodge has a style and character of its own - the perfect retreat to unwind and recharge. Guests love our free unlimited wifi, our freshly-baked bread served at breakfast and relaxing on our sunny terrace with mountain views.

07 892 2688

[welcome@tongarirocrossinglodge.co.nz](mailto:welcome@tongarirocrossinglodge.co.nz)

27 Carroll Street, National Park Village

[www.tongarirocrossinglodge.co.nz](http://www.tongarirocrossinglodge.co.nz)



## SKOTEL ALPINE RESORT

Natural timber design on the slopes of Mt. Ruapehu in the heart of Tongariro National Park, Skotel Alpine Resort offers a true alpine retreat and the best base for skiing, biking, hiking, and sight-seeing.

The Terrace Restaurant & Bar at the Skotel Alpine Resort offers a modern menu including children's menu available daily from 6 pm. The Terrace Bar has a wide selection of NZ wines and one of the largest ranges of craft beer in Whakapapa Village.

0800 756 835

[info@skotel.co.nz](mailto:info@skotel.co.nz)

Ngauruhoe Place, Whakapapa Village

[www.skotel.co.nz](http://www.skotel.co.nz)



## WOOD PIGEON LODGE

Wood Pigeon Lodge offers the choice of 3 places to stay while on your mountain holiday: The Barn which sleeps 11, The Hut which sleeps 2-4 and The Tree House which sleeps 5.

All are filled with rustic and comfortable charm. Surrounded by conservation reserves they are situated on a 20 acre property and are heated by wood burners. Ideal rests from your summer and winter activities in the Tongariro World Heritage area.

07 892 2933

[info@woodpigeonlodge.co.nz](mailto:info@woodpigeonlodge.co.nz)

130 Top Mill Road, Raurimu

[www.woodpigeonlodge.com](http://www.woodpigeonlodge.com)





**A HARD DAY SHOULD  
BE REWARDED  
WITH GOOD FOOD**



## CHATEAU HIGH TEA

Chateau High Tea marks a decades-old tradition of meeting with friends for finger sandwiches, delicate sweets, gourmet fresh teas or coffee and maybe even champagne.

Enjoy the floor-to-ceiling arched Ngauruhoe Window framing the snow-capped Mt Ngauruhoe; or maybe you would prefer to sit in front of the grand fireplace?

0800 242 832 or 07 892 3412

[stay@chateau.co.nz](mailto:stay@chateau.co.nz)

State Highway 48 Whakapapa  
Village Tongariro National Park

[www.chateau.co.nz](http://www.chateau.co.nz)



## NATIONAL PARK SERVICE STATION

Four Square - GAS fuel station - EV charging station

Open 7am to 7pm daily

National Park Village Service Station offers fuel and groceries, as well as coffee, fresh cakes and sandwiches, outdoor gear and clothing, souvenirs, and Lotto sales. We also stock car, motorcycle and quad bike accessories.

07 892 2879

State Highway 4 & State Highway 47  
National Park Village





# PLACES TO EAT



## MACROCARPA CAFÉ

- Open Daily 6am - 8pm
- Great Coffee and Large Café Menu.
- All Day Breakfast, Pizza, Burgers, Takeaways
- Free Wi-fi and Great Atmosphere
- Dairy, Postal Services and Rolled Ice Cream
- Local Area Information

07 892 2911

3 Waimarino-Tokaanu Road  
Cnr State Highway 4 &  
47 National Park

**Macrocarpa Café**  
NATIONAL PARK



## THE PARK HOTEL SPIRAL BAR & RESTAURANT

Amazing views of all three mountains, The Spiral Bar & Restaurant is named after the historic Raurimu railway spiral and has a warm, hospitable atmosphere with a ton of character.

Open extra early for breakfast and again from late afternoon/ evening, seasonal and children's menu, al fresco and Allpress coffee (takeout available).

We pride ourselves on being a favourite of both guests and locals.

0800 800 491 or 07 892 2748

[bookings@the-park.co.nz](mailto:bookings@the-park.co.nz)

Corner Millar St & State Highway 4

National Park Village

[www.the-park.co.nz](http://www.the-park.co.nz)



## SCHNAPPS BAR

Relax by the fire or at the Garden Bar and enjoy the panoramic views of the Tongariro National Park.

Check out our brand new Mini Golf course and enjoy some of the amazing food on offer like our famous Mountain Burger or the top selling Lamb Shanks.

Facilities: Mini Golf, Wholesale, WIFI, SKY Sports.

07 892 2788

[info@schnappsbarruapehu.com](mailto:info@schnappsbarruapehu.com)

Corner of S.H.4 and Findlay St,  
National Park Village

[www.schnappsbarruapehu.com](http://www.schnappsbarruapehu.com)



## STATION CAFÉ

Hungry? Visit the Station Café, Bar and Restaurant within the historic National Park railway station, a lovely spot for travellers passing through or stopping to experience the Tongariro Heritage Park.

Fully licensed, the Station offers a superb atmosphere for breakfast, lunch and dinner or that special occasion. Don't miss out on our traditional Sunday roast for just \$16.50, children half price!

07 892 2881

[park.station@xtra.co.nz](mailto:park.station@xtra.co.nz)

National Park Railway Station

Station Road, National Park Village

[www.stationcafe.co.nz](http://www.stationcafe.co.nz)





## —TONGARIRO— National Park Villages



National Park Village, Whakapapa Village and Raruimu are located at the foothills of the Tongariro National Park. With views of all three mighty volcanoes we are the base for Whakapapa ski field and hiking the world famous Tongariro Alpine Crossing. In winter and summer you can walk the volcanic landscape hire a mountain bike or kayak or canoe the glacial rivers. Learn the Maori history of this Dual World Heritage area.

[tongarirocrossing.org.nz](http://tongarirocrossing.org.nz)

[nationalpark.co.nz](http://nationalpark.co.nz)



### ADVENTURE OUTDOORS TONGARIRO GUIDING

Small Groups / Quality Guides

Join us for an adventure you're sure to remember as the highlight of your NZ vacation.

Winter & Summer guided tours operate daily:

Pre-dawn shuttles to the Tongariro Alpine Crossing

Summer depart 4am / 5am - First Tracks = Perfection

Tours include all gear, guides & shuttles.

0800 386 925

[info@adventureoutdoors.co.nz](mailto:info@adventureoutdoors.co.nz)

[www.adventureoutdoors.co.nz](http://www.adventureoutdoors.co.nz)





## MT RUAPEHU

Mt Ruapehu is home to New Zealand's largest ski areas in Whakapapa & Turoa. Whakapapa boasts the country's premier beginner area, Happy Valley, alongside an abundance of epic big mountain terrain.

Turoa is home to Mt Ruapehu New Zealand's highest lift with a whopping 722m of vertical terrain.

Access both ski areas on one pass.

[mtruapehu.com](http://mtruapehu.com)



## ADRIFT TONGARIRO GUIDED ADVENTURES

Offering Exceptional Guiding

- Tongariro Crossing
- Whanganui Canoeing tours 1-5 days
- Half Day Guided Mountain Bike Tours.

07 892 2751

[info@adriftnz.co.nz](mailto:info@adriftnz.co.nz)

53 Carroll St, National Park Village

[www.adriftnz.co.nz](http://www.adriftnz.co.nz)





# ADVENTURES & ACTIVITIES



## INDOOR CLIMBING HALL

The biggest climbing hall outside the main centres: 8m high, over 300 m2 of wall, 35 top ropes, 55 different climbs, beginners to advanced, grades 10-27, gear hire available, FREE instruction.

Open daily 9 am to 8 pm, casual adult \$15 (includes harness), guests \$10. Group rates available.

07 892 2870

[nat.park.backpackers@xtra.co.nz](mailto:nat.park.backpackers@xtra.co.nz)

Findlay Street, National Park Village

[www.npbp.co.nz](http://www.npbp.co.nz)

**National Park  
Backpackers**



## MINI GOLF

Pop in and check out Schnapps Bar's 18 Hole Mini Golf Course. Great fun for all ages and some of the best views in the world!

Pre-schoolers	\$2.50	Kids	\$6.00
Students	\$8.00	Adults	\$11.00
Seniors	\$7.50	Family Pass	\$28.00

07 892 2788

[info@schnappsbarruapehu.com](mailto:info@schnappsbarruapehu.com)

Corner of S.H.4 and Findlay St,  
National Park Village

[www.schnappsbarruapehu.com](http://www.schnappsbarruapehu.com)



## MOUNTAIN AIR VOLCANIC FLIGHTS

Take a scenic flight around the spectacular volcanoes of the Tongariro National Park Dual World Heritage Area.

Enjoy a short 15 minute flight around Tongariro and Ngauruhoe or be inspired by the variety and beauty of all the volcanoes and natural wonders of the Park on the 35 minute Volcanic Explorer - by far our most popular flight.

0800 922 812 or 07 892 2812

[mountain.air@xtra.co.nz](mailto:mountain.air@xtra.co.nz)

Airfield corner of State Highway 47  
and State Highway 48

[www.mountainair.co.nz](http://www.mountainair.co.nz)



## MY KIWI ADVENTURE

The My Kiwi Adventure Booking Centre is conveniently attached to Schnapps Bar & Mini Golf and offers a one-stop-shop for booking all your adventure activities in Tongariro National Park.

From transport to the Tongariro Crossing, Mt Ruapehu or other local hikes, to mountain biking, stand up paddle boarding and much more.

0800 784 202 or 021 784 202

[info@mykiwiadventure.co.nz](mailto:info@mykiwiadventure.co.nz)

2 Findlay St, National Park Village

[www.mykiwiadventure.co.nz](http://www.mykiwiadventure.co.nz)

**MY KIWI ADVENTURE**

# ADVENTURES & ACTIVITIES



## THE RAFTING CENTRE

Tongariro River Rafting are you whitewater and family rafting specialists. We have all the gear necessary and we can even pick you up from National Park.

If you are interested in another adventure or want to take advantage of one of our other deals, give us a call.



0800 10 10 24

95 Atirau Rd, Turangi

[www.trr.co.nz](http://www.trr.co.nz)



## RUAPEHU ADVENTURE RIDES

We provide guided quad bike & buggy adventures through scenic farmland, native bush, natural streams and heaps of mud!

We have spectacular views, including the beautiful Tongariro National Park.

With a great variation of off-road tracks we can cater each ride to suit your ability.

0800 787 433 or 07 892 2952

[info@ruapehuadventurerides.co.nz](mailto:info@ruapehuadventurerides.co.nz)

[www.ruapehuadventurerides.co.nz](http://www.ruapehuadventurerides.co.nz)



## SKI BIZ / SNOWZONE @ THE ALPINE CENTRE

For expert advice and friendly staff, come in and see us.

**SUMMER:** Sales & Hiring of Tramping & Camping Gear • Hiking Boots • Waterproof Clothing • Back Packs • Hiking Poles • Gloves, Socks, Hats • Sleeping Bags • Gas Cookers • Thermals

**WINTER:** Sales & Hiring of Snow Gear • Skis • Snowboards • Gloves • Goggles • Sledges • Crampons • Clothing • Helmets • Ice Axes

07 892 2717

[skibiz@thealpinecentre.co.nz](mailto:skibiz@thealpinecentre.co.nz)

10 Carroll Street

National Park Village



## TONGARIRO VOLCANIC ADVENTURES

Daily bus to famous Tongariro Alpine Crossing, NZ's best 1 day hike, transport to 42 Traverse, pick up from Fishers Track, Old Coach Road and other mountain bike trails on request. In winter door to door transport to Whapapapa ski field on request.

Our fleet consists of 5 buses, 22 to 46 seats, equipped with snow chains, and one 12 seater 4WD van. Bus transfers for groups/schools and tours on request.

07 892 2870

[nat.park.backpackers@xtra.co.nz](mailto:nat.park.backpackers@xtra.co.nz)

Findlay Street, National Park Village

[www.npbp.co.nz](http://www.npbp.co.nz)

**National Park Backpackers**

# LOCAL SERVICES



## SUMMIT SHUTTLES

Tongariro Alpine Crossing experts!

The most comprehensive schedule! Start super early or after the crowds. Departure times 5.45am, 7am, 8.15am, 9.30am, 10.30am, 11.30am. Multiple returns, no bookings needed - just roll up to the bus and we will get you home!

Park in our safe and secure 'Park and Ride' car park. Youth and group rates available.

0800 828 294

[summitshuttles@gmail.com](mailto:summitshuttles@gmail.com)

[2 Findlay St National Park Village](#)



## TONGARIRO CROSSING SHUTTLES

Shuttles to the BEST one day hike in New Zealand Tongariro Alpine Crossing.

Departing from National Park Village our shuttles leave all day long 6am, 7am, 8am, 9am, 10am, returning 1.30pm, 2.30pm, 3.30pm, 4.30pm, 5.30pm including three departures a day to Tongariro Northern Circuit and Whakapapa Village.

07 892 2993

[info@tongarirocrossingshuttles.co.nz](mailto:info@tongarirocrossingshuttles.co.nz)

[17 Carroll St, National Park Village](#)

[www.tongarirocrossingshuttles.co.nz](http://www.tongarirocrossingshuttles.co.nz)



## TONGARIRO TRACK TRANSPORT

Tongariro Track Transport leaves daily from National Park Village, weather permitting.

The Tongariro Freedom Package will take care of you, with accommodation, transport, breakfast and lunch 'Just Done It' t-shirt. GREAT VALUE.

Check our website for availability, time and costs.

0800 (TRACKT) 872 258

[21 Carroll Street National Park](#)

[tongariroalpinecrossing.com](http://tongariroalpinecrossing.com)



## TONGARIRO VISITOR CENTRE & iSITE

Summer: 8am – 5.30pm

Winter: 8am – 4.30pm (closed Christmas day)

• Hiking track info • Weather, ski field, and avalanche reports • Retail including books, postcards, clothing and gifts • DOC hut tickets and Great Walk reservations • Maps and brochures • Hunting and dog control permits • Accommodation and activity bookings • 24 hour access foyer with public telephone, weather and track information.

07 892 3729

[State Highway 48 Whakapapa Village](#)

[www.doc.govt.nz/tongarirovisitorcentre](http://www.doc.govt.nz/tongarirovisitorcentre)





SHORT WALKS / DAY HIKES

- Mangawhero Falls

10 min return
- Whakapapa Nature Walk

15 min loop
- Mounds Walk

15 min return
- Tawhai Falls

15 min return
- Okupata Caves

30 min return
- Meads Wall

30 min return
- Ridge Track

40 min return
- Te Porere Redoubt

4 5 min return
- Skyline Trail

1-2 hrs return
- Waitonga Falls

1.5 hr return
- Ohinetonga Track

2 hrs return
- Taranaki Falls

2 hrs return
- Whakapapanui

2 hrs return
- Silica Rapids

2 hrs return
- Taurewa Loop

2-3 hrs return
- Whakapapai Valley

4-5 hrs return
- Tupapakurua Falls

4-5 hrs return
- Lake Rotopounamu

2 hrs return
- Tama Lakes

5-6 hrs return
- Crater Lake

5-7 hrs return
- Tongariro Alpine Crossing

6-8 hrs

MOUNTAIN BIKING / QUAD BIKING

- Fishers Track

2-3 hrs
- Marton Sash & Door

2-3 hrs
- Old Coach Road

2-3 hrs
- The Pines Mountain Biking Trails
- Raurimu (Quad Biking)
- Mountains 2 Sea (multi-day cycle trail)

MULTI-DAY ADVENTURES

- Mangapurua Landing

2-3 days
- Tongariro Northern Circuit (Great Walk)

3-4 days
- Whanganui River (Great Walk)

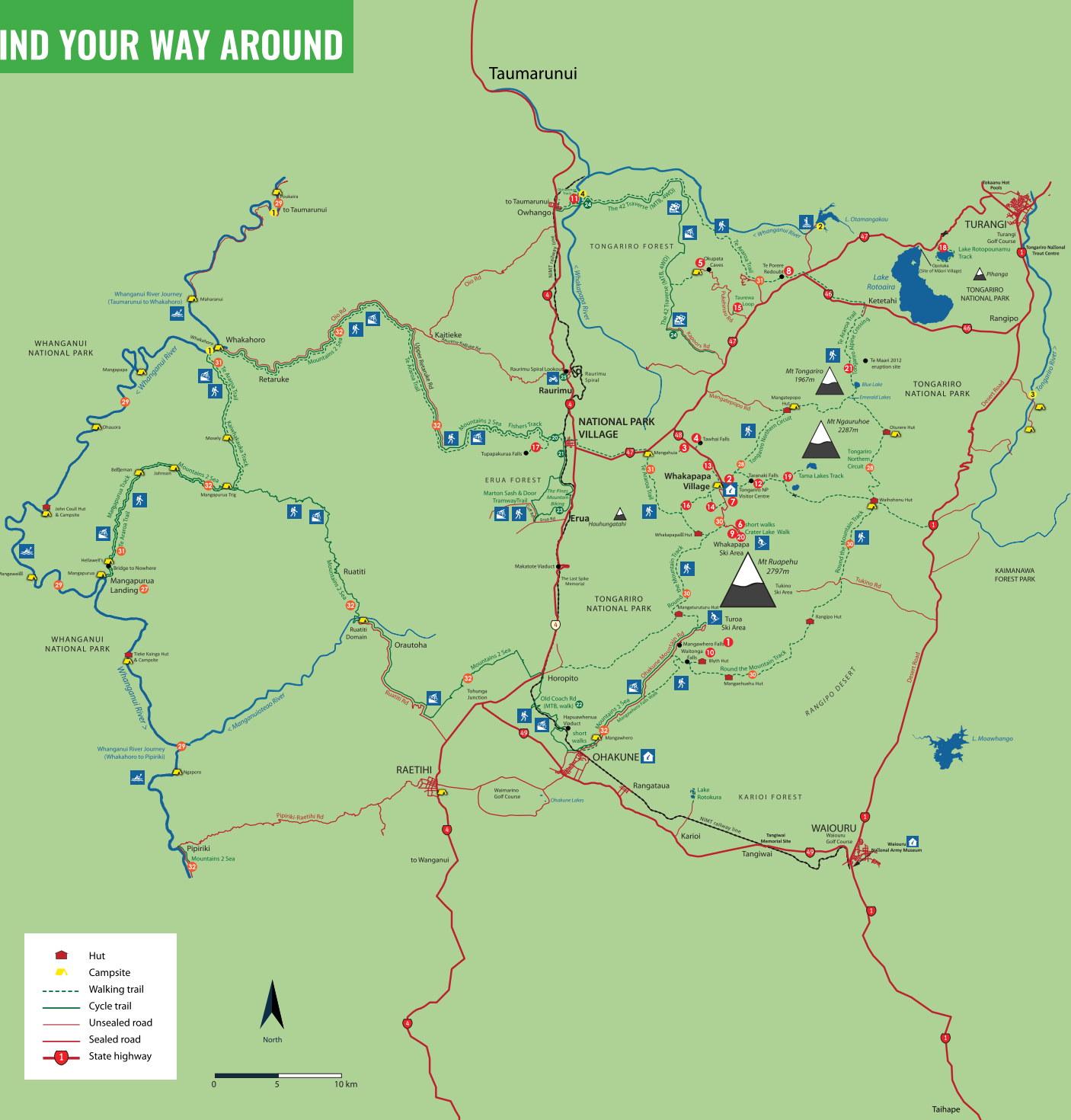
3-5 days paddle
- Round the Mountain Track

4-6 days
- Te Araroa Trail (length of New Zealand)
- Mountain 2 Sea (multi-day cycle trail)

PADDLING / RAFTING / BOATING

- Canoeing / Kayaking / Jet boating the Whanganui River
- Stand Up Paddle Boarding on Lake Otamangakau
- Rafting the Tongariro River
- Kayaking the Whakapapa River

FIND YOUR WAY AROUND



## ACCOMMODATION

1. Adventure Lodge // 07 892 2991 [Carroll Street](#)
3. Alpine Chalets // 07 892 2932 [Findlay Street](#)
4. Chateau Tongariro Hotel // 07 892 3809 [Whakapapa Village](#)
5. Discovery Lodge // 0800 122 122 [State Highway 47](#)
6. Howards Mountain Lodge // 07 892 2827 [Carroll Street](#)
7. Mountain Heights Lodge // 07 892 2833 [State Highway 4](#)
8. National Park Backpackers // 07 892 2870 [Findlay Street](#)
9. Pipers Lodge // 07 892 2777 [Millar Street](#)
35. Pukenui Lodge // 07 892 2882 [Millar Street](#)
10. Ski Haus // 07 892 2854 [Carroll Street](#)
11. Skotel Alpine Resort // 07 892 3719 [Whakapapa Village](#)
31. Slalom Lodge // 07 892 2855 [Whakapapa Village](#)
12. The Crossing Backpackers // 07 892 2894 [State Highway 4, Erua](#)
13. The Park Hotel // 07 892 2748 [Millar Street](#)
34. Tongariro Crossing Lodge // 07 892 2688 [Carroll Street](#)
14. Wood Pigeon Lodge // 07 892 2933 [Raurimu Village](#)
15. Plateau Lodge // 0800 861 861 [Carroll Street](#)
16. Whakapapa Holiday Park // 07 892 3897 [Whakapapa Village](#)

## FOOD & DRINK

4. Chateau Tongariro Hotel High Tea // 07 892 3809 [Whakapapa Village](#)
11. Skotel Alpine Resort // 07 892 3719 [Whakapapa Village](#)
17. Whakapapa Ski Field // 07 892 4000 [Whakapapa Ski Area](#)
18. Macrocarpa Café // 07 892 2911 [Waimarino-Tokaanu Road](#)
19. Schnapps Bar // 07 892 2788 [Findlay Street](#)
20. The Station Café & Restaurant // 07 892 2881 [Cnr Station Road & Findlay](#)
13. Spiral Bar & Restaurant // 07 892 2748 [Millar Street](#)

## TRANSPORT

33. Bus & Train Station [Station Road](#)
1. Tongariro Track Transport // 07 892 2991 [Adventure Lodge](#)
8. Tongariro Volcanic Adventruers // 07 892 2870 [National Park Backpackers](#)
32. Park & Ride [Findlay Street](#)
15. Tongariro Crossing Shuttles // 07 892 993
- ##. Summit Shuttles // 0800 828 294 [Findlay Street](#)
26. My Kiwi Adventure // 0800 784 202
- ##. National Park Shuttles // 027 394 1498

## ACTIVITIES & SHOPS

### GROCERIES & PETROL

36. National Park Service Station // 07 892 2879
18. Macrocarpa Café // 07 892 2911

### SKI, SNOWBOARD & OUTDOOR GEAR RENTAL & SALES

17. Mt Ruapehu Ski Areas // 07 892 4000 [Whakapapa and Turoa](#)
22. Ski Biz Hire & Outdoor Shop // 07 892 2717 [Carroll Street](#)

### GUIDED WALKS

23. Adrift Tongariro and Ruapehu // 07 892 2751
- ##. Adventure Outdoors Tongariro NZ // 0800 386 925

### KAYAKING/CANOEING

23. Adrift Whanganui Guiding // 07 892 2751

### MINI GOLF

19. Schnapps Mini Golf // 07 892 2788

### MOUNTAIN BIKING

23. Adrift Tongariro and Ruapehu // 07 892 275
26. My Kiwi Adventure // 0800 784 202

### QUAD BIKES

27. Ruapehu Adventure Rides // 0800 787 433

### RAFTING

- ##. Tongariro River Rafting // 0800 101 024

### ROCK CLIMBING WALL

8. National Park Backpackers // 07 892 2870

### STAND UP PADDLE BOARDING TOURS

26. My Kiwi Adventure // 0800 784 202

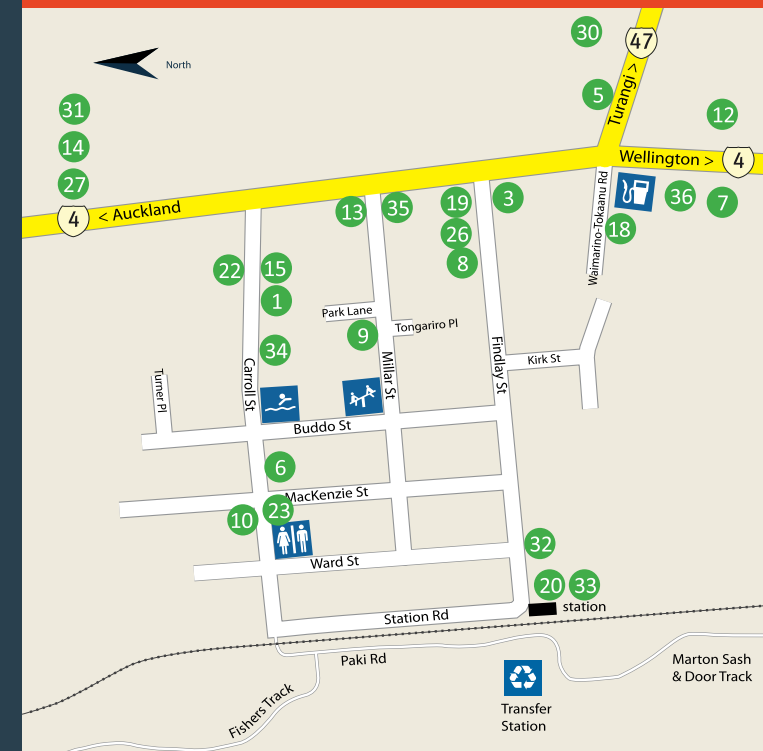
### TONGARIRO NATIONAL PARK VISTOR CENTRE

29. Whakapapa Village // 07 892 3729

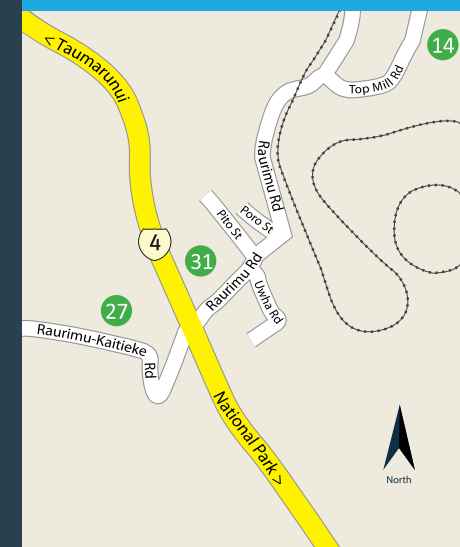
### VOLCANO FLIGHTSEEING

30. Mountain Air // 0800 922 812

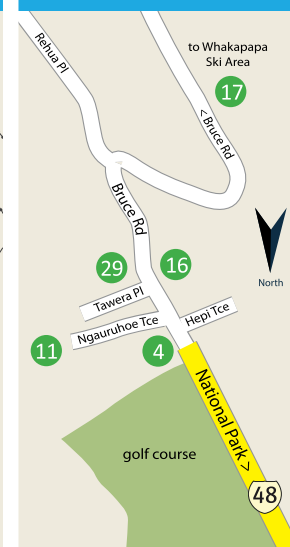
## National Park Village



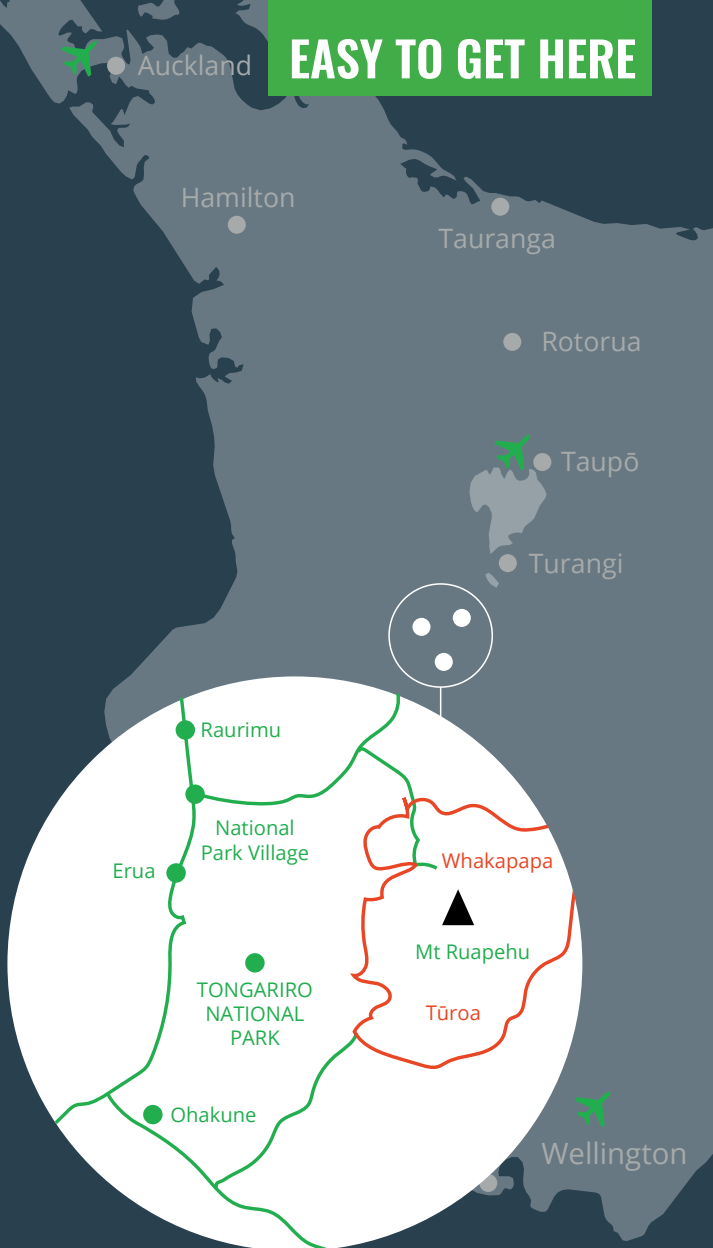
## Raurimu Village



## Whakapapa Village



# EASY TO GET HERE



## DRIVING TIMES from

Hamilton	193km	2.5 hrs
Auckland	323km	4.0 hrs
Wellington	329km	4.0 hrs
Taupo	100km	1.15 hrs
Rotorua	181km	2.10 hrs